

DRAWING NUMBER
50/114

A PLANNED UNIT DEVELOPMENT PLAT NO.3 OF BAY WINDS

BEING A SUBDIVISION OF LAND IN SECTION
27, TOWNSHIP 47 SOUTH, RANGE 41 EAST BEING A
REPLAT OF PORTIONS OF TRACTS 4, 5, 6, 25 & 26,
FLORIDA FRUIT LANDS COMPANYS' SUBDIVISION
NO.2 (P.B.1, PG.102.)

PALM BEACH COUNTY, FLORIDA

SHEET 3 OF 4

AUGUST, 1984

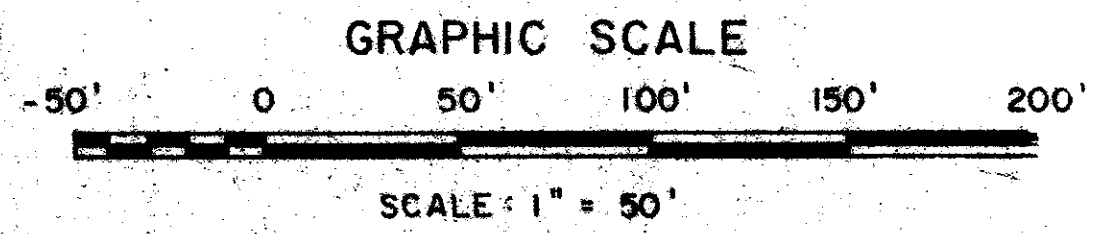
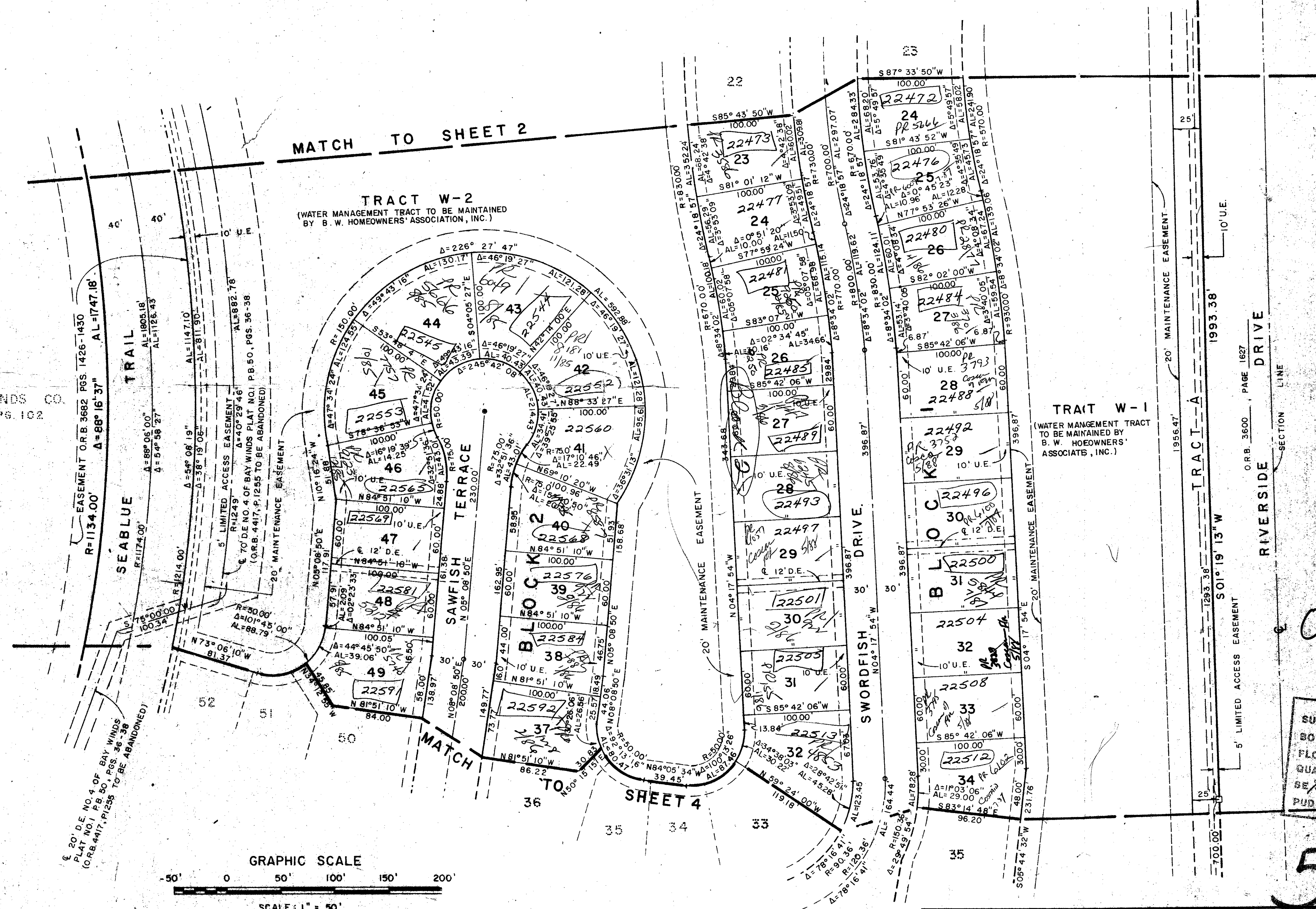
50/114

DRAWING NUMBER

DRAWING NUMBER

DRAWING NUMBER

FLORIDA FRUITLANDS CO.
S/D # 2 P.B. 1, PG. 102



NOTE: ALL LOT LINES ARE RADIAL UNLESS OTHERWISE NOTED

0201-300
 8/21/85 Mr. Christian
 Collect to Survey
 Plat No. 3 of Bay Winds
 22/47/41
 L. J. ...
 ...

SUBDIVISION Bay Winds 3
 BOOK 50 PAGE 114
 FLOOD ZONE A0-1 FLOOD MAP # 1008
 QUAD # 69 ZONING RT
 SEX # ZIP CODE 33433
 PUD NAME Plat No. 3 of Bay Winds

50/114

Field Book No. Pg.	ROBERT E. OWEN & ASSOCIATES, INC. ENGINEERS · PALMS · SURVEYORS WEST PALM BEACH FLORIDA	Job No. 84-1028
Design J. FRITTS		Scale 1" = 50'
Drawn L. BISPOTT		Date AUG, 1984
Checked P. KRICK		Sheet 3
		File No. BF-2325-C